

# The Getty Vocabularies: Content Review and Usage Status

CICOC 2017, Tbilisi, Georgia

Gregg Garcia, Software Architect

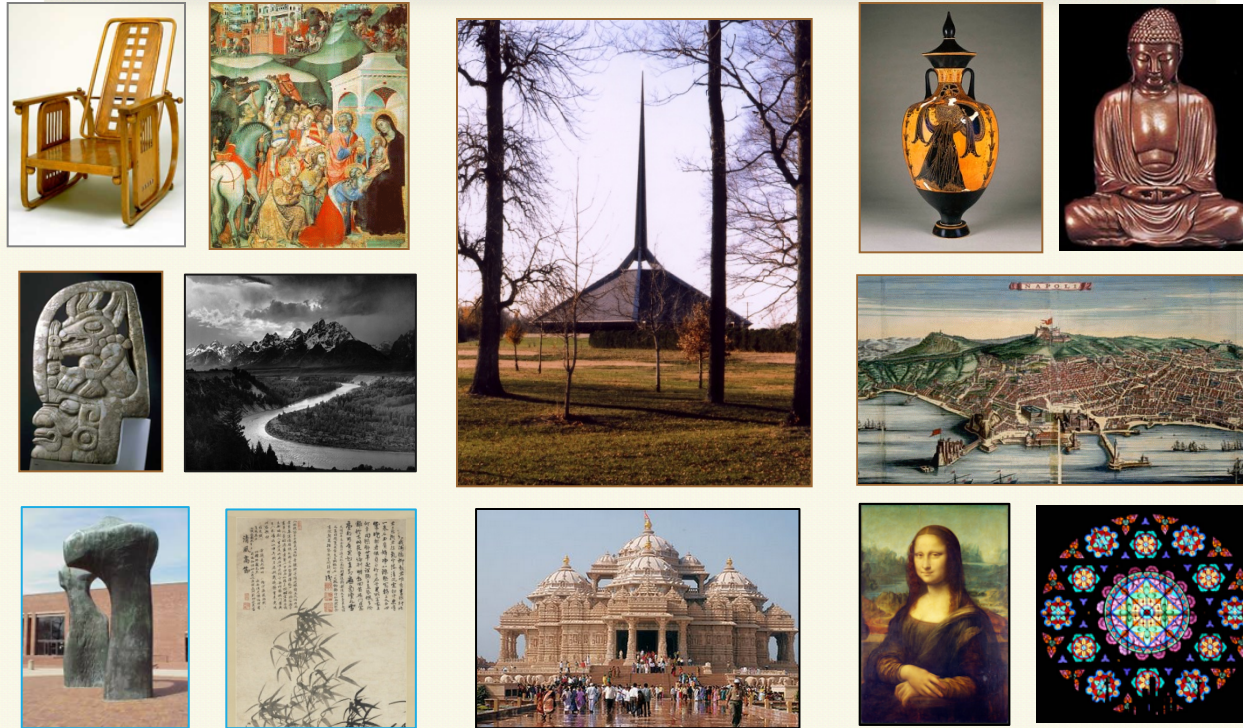
Jonathan Ward, Senior Editor

Getty Research Institute, Los Angeles



# The Getty Vocabularies

- Part 1- Multilingual Thesauri for Access to Art History
- Part 2 - Linked Open Data and the Getty Vocabularies: Expanding Access
- Part 3 - Usage Examples and Future Initiatives
- Part 4 - Conclusion: The Vocabulary Program's Commitment to Access



# THE GETTY VOCABULARIES: MULTILINGUAL THESAURI FOR ACCESS TO ART HISTORY

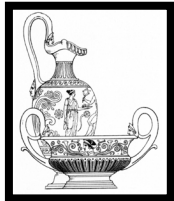
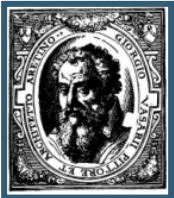
Jonathan Ward

Senior Editor, Getty Vocabulary Program

CIDOC 2017, Tbilisi

# The Getty Vocabularies

Discover, link, access, retrieve, research, catalog, index



## ***Catherine wheel or rose window? Mona Lisa or La Gioconda?***

- The Getty Vocabularies are structured vocabularies that comply with national and international standards for thesaurus construction
- They contain multilingual terminology and other related data for art, architecture, other cultural heritage works, conservation, archaeology, archival materials, visual surrogates, and bibliographic materials
- The Getty vocabularies allow for categorization, indexing, and powerful retrieval of information
- For each concept, a preferred term is flagged, representing common usage in authoritative sources; users may choose that term, or use any of the other terms in the record



# The Getty Vocabularies

Discover, link, access, retrieve, research, catalog, index



- *Art & Architecture Thesaurus* ®

AAT = terms for generic concepts, relationships, other data

- (e.g., *watercolors*, 玉器, *amphora*, *asa-no-ha-toji*)



- *Getty Thesaurus of Geographic Names* ®

TGN = names for administrative, physical places, relationships, historical information, coordinates, other data

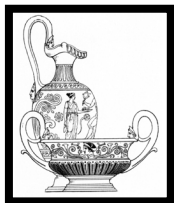
- (e.g., *Diospolis*, *Acalán*, *Ottoman Empire*, *Ganges River*)



- *Union List of Artist Names* ®

ULAN = names for people, corporate bodies, biography, relationships, other data

- (e.g., *Christopher Wren*, *Altobelli & Molins*, *Anp'yŏng Taegun*)

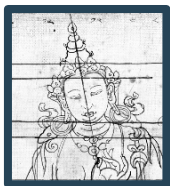


- *Cultural Objects Name Authority* ®

CONA = not only titles/names of art and architecture

- (e.g., *Mona Lisa*, *Livre de la Chasse*, *Chayasomesvara Temple*)

- **In development:** CONA links rich metadata for works to allow a conduit for research and discovery in the broader, ever expanding arena of digital art history



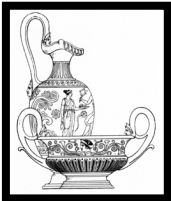
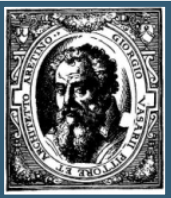
- *Getty Iconography Authority*

- (e.g., *Adoration of the Magi*, *Zeus*, *French Revolution*, *Der Ring des Nibelungen*, *Reclining Buddha*)

- **In development:** Now a module of CONA, includes names for iconographical narratives, religious or fictional characters, historical events, names of literary works and performing arts

# The Getty Vocabularies

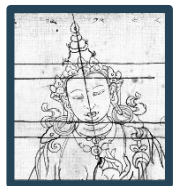
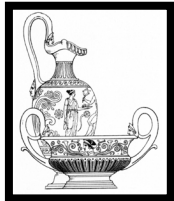
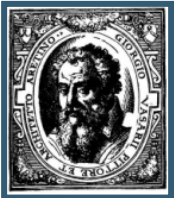
Discover, link, access, retrieve, research, catalog, index



- Developed in the 1980s from a need within the museum and library communities
- Standardized, well-sourced vocabularies for collection management systems
- Free, open, and collaborative
- International and multilingual
- Metadata: the key to art and image access
- Consistently one of the most popular tools on the Getty website

# The Getty Vocabularies

Discover, link, access, retrieve, research, catalog, index



Getty Vocabularies are compliant with / map to standards:

- CDWA (Categories for the Description of Works of Art)
- CCO (Cataloging Cultural Objects)
- VRA Core (Visual Resources Association core categories)
- LIDO (Lightweight Information Describing Objects)
- CIDOC CRM (CIDOC Conceptual Reference Model) (ISO 21127:2006)
- etc.

Getty vocabularies are **thesauri** compliant with national (NISO) and international (ISO) standards for thesaurus construction

# VOCABULARIES ARE USED TO INDEX A WORK RECORD

**Record Type:** item

**Classification:** prints and drawings

**Work Type:** •drawing •rendering AAT

**Title:** Bulto

**Creator Display:** rendered by Eldora P. Lorenzini (American, 1910-1993)

**Index:** Eldora P. Lorenzini (American, 1910-1993) ULAN

**Role:** rendered

**Materials display:** watercolor, pen, and ink on paper

**Index:** •watercolor •pen •ink •graphite •laid paper AAT

**Dimensions:** overall: 55.9 x 40.2 cm (22 x 15 13/16 in.)

Value: 55.9 Unit: cm Type: height Value: 40.2 Unit: cm Type: width

**Creation Date:** 1938 Start: 1938 End: 1938

**Current Location:** National Gallery of Art (Washington, DC, USA) ULAN

**Repository number:** 1943.8.16638

**Creation Location:** Santa Fe (New Mexico, USA) TGN

**General Subject:** •another work •religion & mythology

**Specific Subject:**

•Bulto, Andrés García CONA

•sculpture •figures •bulto •farming •plow •oxen AAT

•St. Isadore IA

Source: Folk Arts of the Spanish Southwest from the Index of American Design, Object 16 of 25

Related Works: Bulto, Fray Andrés García, 16th century. Location Unknown. Relationship Type: depicts

Description: Isadore, the patron saint of farmers and protector of crops, was a farm laborer employed by a wealthy landowner near Madrid in the early twelfth century. According to legend, Isadore spent so many hours in prayer that he was in danger of falling behind with his farming chores. As a reward for his exceptional piety, divine intervention dispatched an angel to help Isadore finish his plowing on schedule. This miraculous event is the subject of an eighteenth-century New Mexican devotional sculpture or bulto. The most important figure in a bulto's composition was typically represented as the largest, seated heavenly figure bumping over obstacles. This is why Isadore towers above the angel, who in turn outwits the oxen, surpassing them in scale. Bultos such as this one were placed in both homes and churches to help ward a farmer's intercession on behalf of a powerful equivalent. This sculpture of Saint Isadore is attributed to a Franciscan friar, Fray Andrés García, Unfortunately, the face of Saint Isadore has been repaired at least once or twice, and a conclusive attribution is not possible. The Franciscans established missions in New Mexico, the northern frontier of Spanish America, which was first settled at the end of the sixteenth century. Fray Andrés García was a Franciscan friar born in La Puebla de los Angeles, Mexico.





# VOCABULARIES ARE USED TO INDEX A WORK RECORD

**Record Type:** item

**Classification:** prints and drawings

**Work Type:** •drawing •rendering

AAT

**Title:** Bulto

**Creator Display:** rendered by Eldora P. Lorenzini (A

**Index:** Eldora P. Lorenzini (American, 1910-1993)

**Role:** rendered

**Materials display:** watercolor, pen, and ink on paper

**Index:** •watercolor •pen •ink •graphite •laid paper

**Dimensions:** overall: 55.9 x 40.2 cm (22 x 15 13/16 i

Value: 55.9 Unit: cm Type: height Value: 40.2 Unit:

**Creation Date:** 1938 Start: 1938 End: 1938

**Current Location:** National Gallery of Art (Washing

**Repository number:** 1943.8.16638

**Creation Location:** Santa Fe (New Mexico, USA)

**General Subject:** •another work •religion & mytho

**Specific Subject:**

•Bulto, Andrés García

CONA

•sculpture •figures •bulto •farming •plow •ox

•St. Isadore

IA

AAT

## Terms:

watercolor (paint) (preferred,C,U,American English-P,D,U,N)

watercolors (paint) (C,U,American English,AD,U,N)

water color (paint) (C,U,American English,UF,U,N)

watercolor paint (C,U,American English,UF,U,N)

water color paint (C,U,American English,UF,U,N)

water-colour (paint) (C,U,British English-P,D,U,N)

water-colours (paint) (C,U,British English,AD,U,N)

colour, water (paint) (C,U,British English,UF,U,N)

water colour (paint) (C,U,British English,UF,U,N)

watercolour (paint) (C,U,British English,UF,U,N)

water-colour paint (C,U,British English,UF,U,N)

akvarel (C,U,Danish-P,D,U,N)

watervarf (C,U,Dutch-P,D,U,U)

aquarelverf (C,U,Dutch,UF,U,U)

aquarelle (peinture) (C,U,French-P,D,U,N)

aquarelles (peinture) (C,U,French,AD,U,N)

Aquarell (C,U,German-P,D,U,N)

acquerello (pigmento, pittura) (C,U,Italian-P,D,U,N)

acquarello (C,U,Italian,AD,U,U)

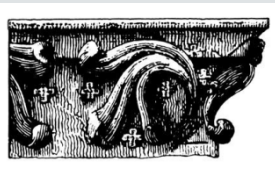
akvarell (C,U,Norwegian (Nynorsk)-P,D,U,N)

(Swedish-P,D,U,N)

akwarela (C,U,Polish-P,D,U,N)

aguarela (C,U,Portuguese-P,D,U,N)

acuarela (C,U,Spanish-P,D,U,N)



# Art & Architecture Thesaurus®

**AAT**, the Art & Architecture Thesaurus®, includes generic terms, relationships, sources, and scope notes for work types, materials, styles, cultures, processes, techniques, activities, roles, and abstract concepts.

- AAT is multilingual; large translation projects are underway
  - Centro de Documentación de Bienes Patrimoniales, Chile; Netherlands Institute for Art History (RKD); Academia Sinica of Taiwan; the Staatliche Museen zu Berlin Preussischer Kulturbesitz
- AAT grows through contributions, translations and others, e.g., GCI for conservation terms, multicultural terms for indigenous cultures' works; contributors and sources are cited
- The scope is global: AAT includes generic terms to describe art, architecture, decorative arts, design, artifacts, other material culture, visual surrogates, archival materials, archaeology, and conservation
- The major subdivisions (facets) are the following:

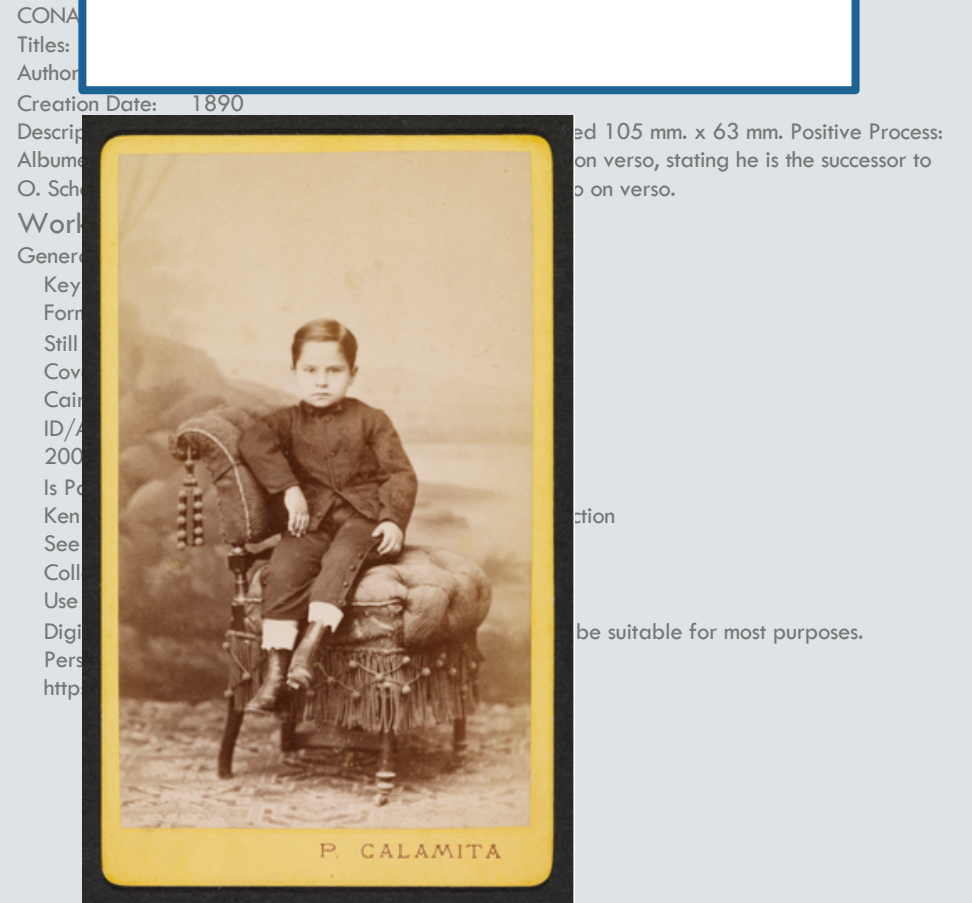
<i>Associated Concepts</i>	<i>Physical Attributes</i>	<i>Styles and Periods</i>	<i>Agents</i>	<i>Activities</i>	<i>Materials</i>	<i>Objects</i>	<i>Brand Names</i>
----------------------------	----------------------------	---------------------------	---------------	-------------------	------------------	----------------	--------------------

# Thesaural structure

- Sub-facets (called “hierarchies”) establish the context of the term
- Guide terms in angled brackets

[illegible]

Work type: carte-de-visite





# Thesaural structure

- Indexers may choose the term that best describes the work
- The concept and each term are identified by unique numeric IDs
- e.g., singular for a single item, language
- Some systems or local cataloging rules do not allow linking at the term level

AAT subject\_id 300127141

*Work type:* carte-de-visite

cartes-de-visite (card photographs) (preferred,C,U,English,P,D,U,PN)  
(fotografische kaarten) (Dutch-P,D,U,PN)  
(photographies) (French-P,D,U,PN)  
**carte-de-visite (card photograph) (C,U,English,AD,U,SN)**  
(Dutch,AD,U,U)  
cartes de visite (card photographs) (C,U,English,UF,U,N)  
card photographs (cartes-de-visite) (C,U,English,UF,U,N)  
carte-de-visite photographs (C,U,LC,English,UF,U,N)  
cartes de visite photographs (C,U,English,UF,U,N)  
sure cards (C,U,English,UF,U,N)  
Visitenkartenporträts (fotografische Abzüge) (C,U,German-P,D,U,PN)  
Visitenkartenporträt (fotografischer Abzug) (C,U,German-P,D,U,PN)  
tarjetas de visita (obra visual) (C,U,Spanish-P,D,U,PN)  
tarjeta de visita (obra visual) (C,U,Spanish,AD,U,SN)

term\_id

1000127141

term\_id

1000299275

term\_id

term\_id

term\_id

term\_id

term\_id

term\_id

term\_id

term\_id

1000438274







# AAT, the Art & Architecture Thesaurus®

## Sample record

preferred  
flagged,  
but not  
required to  
use it;  
based on  
local rules

**ID:** 300132869

### **Terms:**

bobbin lace (pref, en)

bone lace (en)

cushion lace (en)

梭心蕾絲 (zh)

線軸編織花邊 (zh)

kloskant (nl)

dentelle aux fuseaux (fr)

encaje de bolillos (es)

encaje de bolillo (es)

Klöppelspitze (de)

Klöppelspitzen (de)

### **Associative Relationships**

requires ... lace pillows (<textile  
fabricating tools and  
equipment>...Objects Facet)  
[300132869]

### **Hierarchical Relationships (poly)**

.Objects Facet  
... Visual & Verbal Communication  
..... Visual Works  
..... visual works (works)  
..... <visual works by material >  
..... needlework (visual works)  
..... lace (needlework)  
..... bobbin lace

**Note:** With "needle lace," one of two  
primary types of handmade lace. It is  
characterized by being made by ...

**Chinese (traditional)** ..... 與「針織蕾絲  
(needle lace)」同為主要的手工蕾絲，  
其特色是以纏繞於線軸或梭心...

**Dutch** ..... Een van de twee belangrijkste  
soorten met de hand vervaardigde kant;  
'naaldkant' is ...

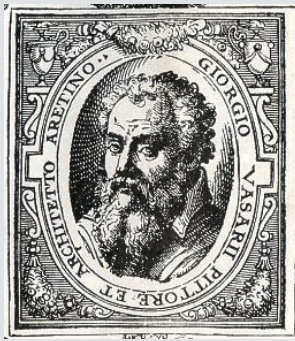
**German** ..... Zusammen mit der  
"Nadelspitze" eine der wichtigsten...

**Spanish** ..... Junto a "encaje a aguja",  
uno de los dos tipos principales de ...

**Contributors:** VP,CHIN,AS,RKD,lFM-SMB-PK,CDPB-DIBAM

**Sources:** Earnshaw, Claburn, Needleworker's Dictionary (1976); Identification  
of Lace, 2d ed. (1984); Ginsburg, Illustrated History of Textiles (1991)

Achilles Painter  
An Qi  
安岐  
Bartolo di Fredi  
Burgkmair, Hans,  
the elder  
Galleria degli Uffizi  
Gilbert & George  
Katsushika Hokusai  
Kicking Bear  
Master of Boí  
Méraud, Pierre-  
Antoine, père  
Ngapatari, Hakaraia  
O'Keeffe, Georgia  
Pei, I. M.  
Rothko, Mark  
Sa'īd, Mahmūd  
Skidmore, Owings  
& Merrill  
unknown Mende  
Vikramaditya I  
Wren, Christopher  
Zeuxiades  
Ζευξιάδης



# Union List of Artist Names ®

**ULAN**, the Union List of Artist Names®, includes names, appellations (e.g., Master of ...), dates, sources, relationships, nationality, and life roles for artists, architects, firms, studios, repositories, patrons, sitters, and other individuals and corporate bodies, both named and anonymous.

- ULAN is multilingual
- The scope is global; ranges from prehistory to the present
- ULAN includes current & historical relationships (e.g., *student-teacher*, *firm-member*)
- ULAN contains hierarchical, equivalence, & associative relationships
- ULAN grows through contributions from expert users, scholars, & art repositories (e.g., GRISC finding aids); contributors and sources are cited
- Major subdivisions include the following:
  - People who are artists, Corporate bodies (studios, firms, repositories),
  - People who are not artists, Unknown people by culture (e.g., *unknown Aztec*),
  - and Unidentified named people (e.g., *Reverend Smith [unidentified]*)



# ULAN, the Union List of Artist Names®

## Sample record

**ID:** 500115493

### **Names:**

Dürer, Albrecht (pref,de,en)  
Albrecht Dürer  
Duerer, Albrecht (en)  
Durer, Albrecht (en)  
Dürero, Alberto (it)  
Durerus, Albertus (la)  
Direr, Albreht  
Djurer, Albrecht  
Dyûrâ, Albrecht  
Dîrers, Albrehts  
Alberto Duro Tedesco  
デューラー, アルブレヒト (ja)  
阿尔布雷希特·丢勒 (zh)

### **Nationalities:**

German (pref)  
Bavarian

**AAT**

### **Roles:**

artist (preferred)  
painter  
printmaker  
engraver (printmaker)  
woodcutter  
draftsman  
illustrator  
designer  
mathematician  
theorist  
portraitist  
religious artist

**Gender:** male

### **Display biography**

German printmaker and painter, 1471-1528

**Birth and Death Dates:** Birth: 1471 Death: 1528

**Birth and Death Places:**

Born: Nuremberg (Bavaria, Germany) (inhab place)

Died: Nuremberg (Bavaria, Germany) (inhab place)

**Events:**

active: Nuremberg (Bavaria, Germany) (inhab pl)

active: Venice (Veneto, Italy) (inhabited place)

**TGN**

### **Associative Relationships:**

apprentice of Wolgemut, Michael; 1486 to 1489

.....(German painter, printmaker, 1434/1437-1519)

child of Dürer, Albrecht, the elder

.....(German goldsmith, 1427-1502)

founder of ...Albrecht Dürer Workshop

..... (German workshop, established 1495)

patron was ...Maximilian I, Holy Roman Emperor

..... (Roman emperor, 1459-1519)

**Contributors:**

VP,JPGM,Avery,WCI,Prov,GRLPSC,BHA,CCA

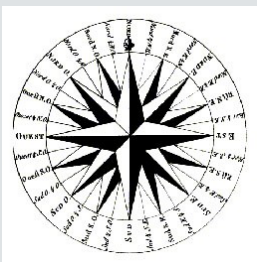
**Sources:** Bartrum, Albrecht Dürer and his Legacy (2002);  
Bénézit, Dictionnaire des Peintres (1976; Bartsch, Le peintre graveur.





Angel Falls  
Athens  
Athínaí  
Αθήναι  
Ayers Rock

Bay of Biscay  
Bhārat  
Bora-Bora  
Burkina Faso  
Casablanca  
Chichén Itzá  
Donner Pass  
Firenze  
Gdansk  
Holy See  
Los Alamos  
Luxor  
Micronesia  
New Zealand  
Perú  
Rapa Nui  
Taipei  
臺北  
Toronto  
Yisrael



# Getty Thesaurus of Geographic Names®

**TGN**, the Getty Thesaurus of Geographic Names®, includes names, relationships, dates, sources, and coordinates for current & historical cities, nations, empires, archaeological sites, & physical features.

- TGN is multilingual; the scope is global; it ranges from prehistory to the present
- TGN focuses on places important to art and material culture
- TGN includes current and historical cities, nations, and empires
- TGN includes real places, not mythical or legendary; however, TGN includes formerly inhabited places and historical places with unknown exact locations ( “lost settlements”)
- TGN is a thesaurus, compliant with international standards for thesaurus construction; it contains hierarchical (polyhierarchical), equivalence, & associative relationships
- TGN includes current and historical relationships
- TGN is not a GIS (Geographic Information System), but may be linked to maps & GIS
- TGN grows through contributions from the expert user and scholar communities, large national geographic databases; contributors and sources are cited
- Major subdivisions include continents, nations, empires
  - World (Africa, Alexandrian Empire, Antarctica, Asia, Europe, Holy Roman Empire, etc.);
  - Extraterrestrial Places (Milky Way Galaxy, etc.)





# TGN, the Getty Thesaurus of Geographic Names®

## Sample record

**ID:** 7011179

**Names:**

Siena

(it,en,es,fr,nl,de)

Σιένα (el)

Siyenah

锡耶纳 (zh)

シエーナ (ja)

Sienese (en-adj)

Sienna (h-en)

Sena Julia (h-la)

Sanna (h)

Saena (h)

**Hierarchical Rels.** (polyhierarchical)

World (facet)

.. Europe (continent)

... Italy (nation)

.... Tuscany (region)

..... Siena (province)

..... Siena (inhabited place)

World (facet)

.. Europe (continent)

... Italian Peninsula (peninsula)

.... Etruria (former confederation)

..... Siena (inhabited place)

Historical: Late Etruscan

**Associative Rels**

**ally of** Pisa ..(inhabited place) [7006082]

Ghibelline allies, 13th-14th centuries

*Contributors:* BHA, FDA, GRLPSC, VP

*Sources:* *Annuario Generale* (1980); *Canby, Historic Places* (2007) 2/861; *Dizionario Corografico Toscana* (1977) 1508; *Library of Congress Subject Headings* (2002-); *Milanesi, Storia dell'Arte Senese* (1969) *passim*; *NGA/NIMA database* (2003-) -129709; *TCI: Toscana* (1984) 479 ff; *Times Atlas of the World* (1992) 183; *UNESCO World Heritage Centre [online]* (1992-) accessed 20 July 2010; *Webster's Geographical Dictionary* (2007) 1114

**Place Types**

inhabited place settled by Etruscans  
(flourished by 6th century BCE)

city

archiepiscopal see

commune (administrative) since 1125

cultural center

university center

world heritage site

AAT

*Lat:* 43 19 07 N (43.3180)

*Long:* 011 19 50 E (11.3300)

*Elevation:* 1056.430 feet (322.0000 meters)

**Note:** Siena was founded as an Etruscan hill town; later was the Roman city of Sena Julia (3rd century BCE). It flourished under the Lombard kings (6th century CE) and was Medieval self-governing commune ...

The Nightwatch  
Tree of Life Quilt  
Bhimesvara Temple  
Cane Back Chair  
Château de Versailles



# Cultural Objects Name Authority®

Das Treffen der  
Heiligen Drei Könige  
Empire State Building  
Himeji Castle  
姫路城  
Irises  
La Gioconda  
Model for the Façade  
of San Lorenzo  
Mona Lisa  
MS Ludwig XV  
Pantheon  
Portrait of Napoleon  
Square Ting Vessel of  
Duke Kang  
西周早期 康侯方鼎  
Still Life with Flowers  
Venus and Cupid  
Warrior on Horseback  
Zwaardstootplaat

**CONA**, the Cultural Objects Name Authority®, is a new resource available for contributions. CONA compiles titles, creator attributions, depicted subjects, physical characteristics, and other metadata about works of art, architecture, and cultural heritage, both extant and historical. Sources include museum collections, special collections, archives, libraries, scholarly research, conservation projects, and documentation projects. CONA is linked to AAT, TGN, ULAN, and IA.

- CONA is multilingual; the scope is global; ranges from prehistory to the present
  - CONA includes current and historical relationships (e.g., folios for a lost manuscript)
  - CONA is compliant with *Categories for the Description of Works of Art* (CDWA) and *Cataloging Cultural Objects* (CCO); mapping to CIDOC CRM being investigated
  - CONA is a thesaurus, compliant with international standards for thesaurus construction
  - CONA contains hierarchical (polyhierarchical), equivalence, & associative relationships
  - Minimum data includes title or name, work type, creator, creation date, materials, dimensions, subject, geographic location (for architecture) or repository and repository ID
  - CONA grows through contributions from art repositories, expert users, and scholars
- 
- Major subdivisions include the following: Built Works, Movable Works, Visual Surrogates, Conceptual Works, Unidentified Named Works



# CONA, the Cultural Objects Name Authority®

## Sample record

- CONA links work records to  
Getty vocabularies**

**ID:** 700001950

**Titles:**

Shiva met de maan in het haar (nl)

Shiva with the Moon in his Hair (en)

**Catalog Level:** item

**Work Types:**

sculpture (visual work) **AAT**

**Classifications:**

sculpture (preferred)

**Creation Date:** 1000/1200

**Creator Display:**

anoniem

sculptor: unknown Chola **ULAN**

**Locations:** **ULAN**

**TGN**

**Current:** Rijksmuseum (Amsterdam, North Holland, Netherlands) AK-MAK-1291; RM001.collect.910; Bruikleen van de Vereniging van Vrienden der Aziatische Kunst

**Creation:** Tamil Nādu (India)

**Materials:** bronze founding **AAT**

**Dimensions:** 40 cm (height) x 24cm (width) x 10.5 (depth)

**Events:** exhibition: Metamorfoze/Geheugenproject Willem Witsen

**Cultures:**

Indian Chola **AAT**

**General Subject:**

human figure(s) (preferred )  
religion and mythology

**AAT**  
**TGN**  
**ULAN**  
**CONA**  
**CONA IA**

**Specific Subjects:**

Shivá (Hindu iconography) **IA**

mudrā (pose, <visual and representational concepts>) **AAT**

[link to Iconclass]

**Contributors:** Rijksmuseum;VP **Sources:** Rijksmuseum XML file



Adoration of  
the Magi  
Adorazione  
dei Magi  
Coronation of

Louis XIV  
Death and the  
Miser

Ganesh  
Hades

Hercules  
Herakles

Olouaipipilele  
Niflheim

Reclining Buddha  
Bouddha couché  
涅槃仏

Storming of the  
Bastille

The Divine  
Comedy

Virgin Hodegetria  
World War I

WWI

Xibalba



# Getty Iconography Authority™

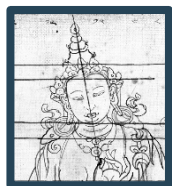
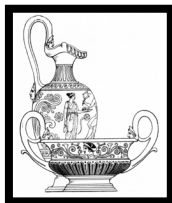
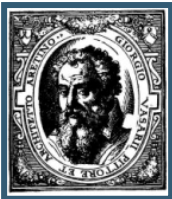
**IA**, the Getty Iconography Authority™, is a new resource available for contributions. It includes named events, religious & mythological iconography, fictional characters & places, themes from literature.

- IA is multilingual; scope is global; includes topics from all places and periods
- IA includes the proper names of subjects referenced in art and cultural heritage but not covered by the other Getty vocabularies (AAT = generic concepts, TGN = real places, ULAN = real people, CONA = names of art objects and architecture)
- IA is compliant with the Subject Authority of CDWA (*Categories for the Description of Works of Art*) and the Subject Authority of CCO (*Cataloging Cultural Objects*)
- IA is a thesaurus, compliant with international standards for thesaurus construction
- IA contains hierarchical (polyhierarchical), equivalence, & associative relationships
- IA grows through contributions to CONA, and independently from expert users, scholars, and repositories of art
- Includes links to resources such as *Iconclass* and US Library of Congress authorities
- As of this writing, IA is a module within CONA; over time, IA will become a standalone authority
- IA includes the following major subdivisions: Legend, Religion, Mythology; Literature and Performing Arts; Named Events; Miscellaneous (Miscellaneous Allegory, Symbolism; Characters; Legendary Places; Themes and Narrative)



# The Getty Vocabularies

Discover, link, access, retrieve, research, catalog, index

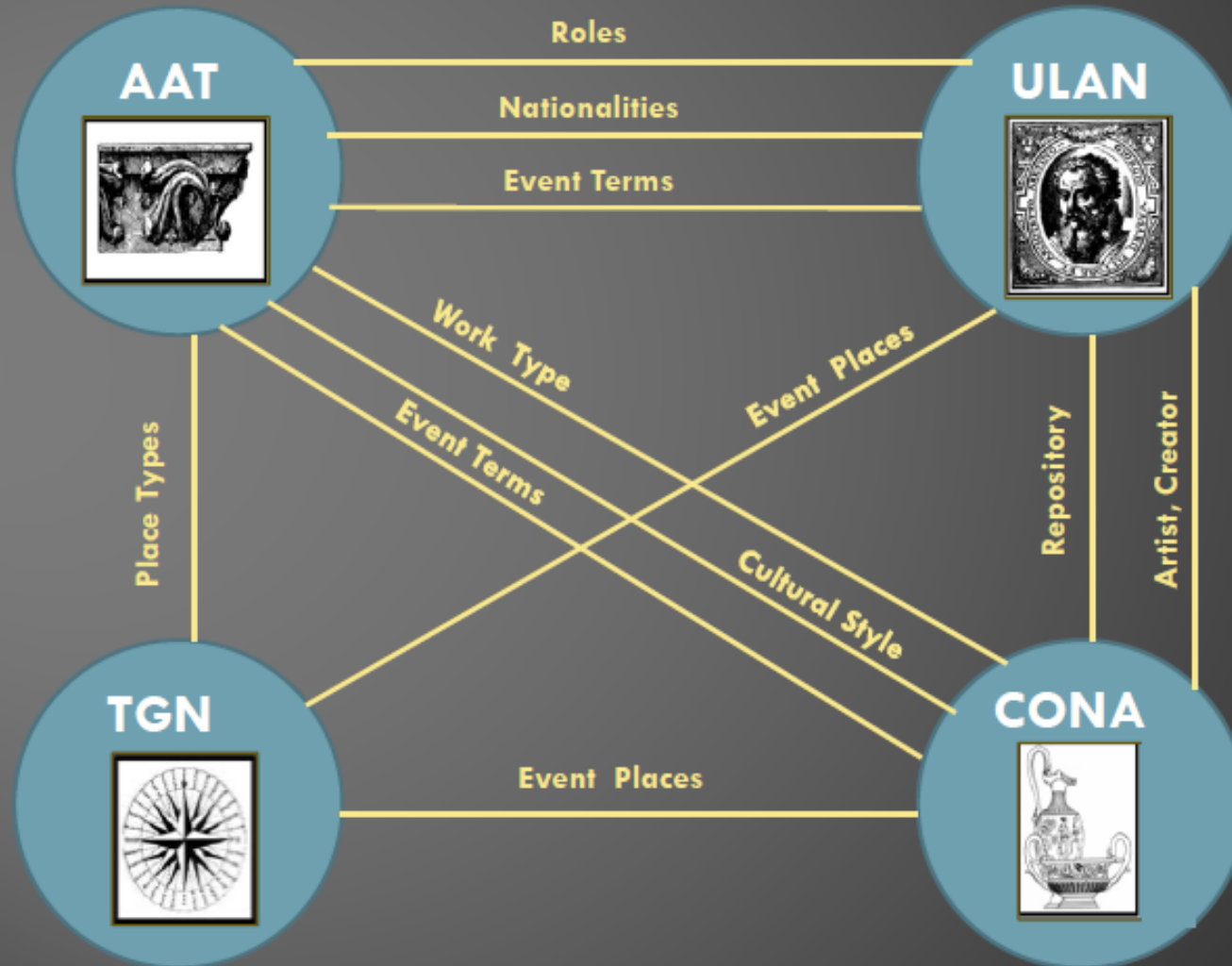


## Power of Term Relationships

- **Hierarchical:** all records have parent-child relationships
- **Equivalence:** variant terms
- **Associative:** records can be linked between hierarchies

# Getty vocabularies are linked to each other

<http://vocab.getty.edu>



- Primo Search
- ▶ Getty Research Portal
- Collection Inventories & Finding Aids
- ▶ Photo Archive
- ▶ Research Guides & Bibliographies
- Digital Collections
- ▶ Article & Research Databases
- ▶ Collecting & Provenance Research
- BHA & RILA
- ▼ Getty Vocabularies
  - ▶ Art & Architecture Thesaurus (AAT) ®
  - ▶ Cultural Objects Name Authority (CONA) ®
  - ▶ Getty Thesaurus of Geographic Names (TGN) ®
  - ▶ Union List of Artist Names (ULAN) ®
  - Contribute
  - Editorial Guidelines
  - **Getty Vocabularies as Linked Open Data**
  - Frequently Asked Questions
  - ▶ Obtain the Getty Vocabularies
  - Training Materials

## Getty Vocabularies as Linked Open Data

The Getty vocabularies are constructed to allow their use in linked data. A project to publish them to the LOD (Linked Open Data) cloud is underway. The documents on this page contain news and presentations about releasing the Getty vocabularies as LOD. These materials are subject to frequent modification and addition.



- [News and Status of the Project](#)
- [What Is LOD?](#)
- [Introduction to Getty Vocabularies as LOD](#) (PDF, 3.8 MB, 46pp)
- [List of External Advisors](#) (PDF, 88KB, 7pp)

The AAT, TGN, and ULAN are now available as LOD. They are published under the [Open Data Commons Attribution License \(ODC-By\) 1.0](#).

---

### ■ **Attention developers and programmers:**

Technical documentation to assist in exploring the AAT, TGN, and ULAN data is available at the SPARQL endpoint at [vocab.getty.edu](http://vocab.getty.edu)

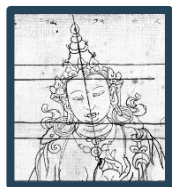
---

### **News and Status of the Project**

Releasing the Getty vocabularies as Linked Open Data is part of the Getty's ongoing effort to make our knowledge resources [freely available](#) to all. Making the Getty vocabularies available to the research community as LOD could have a truly

# The Getty Vocabularies

Discover, link, access, retrieve, research, catalog, index



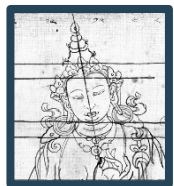
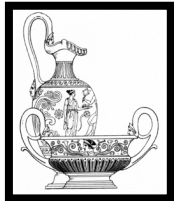
## Uses

- Vocabulary data is licensed and used by hundreds of institutions and vendors, or downloaded as LOD
- Collections management systems (e.g., TMS)
- Online data searches
- Now linking vocabulary data in LOD in hundreds or thousands of new ways



# The Getty Vocabularies

Discover, link, access, retrieve, research, catalog, index



## Access

- **Data is made available in various ways:** via online searching; Web services APIs; licensed relational tables and XML format annual releases

- **Download Center** – sample data, schemas  
<http://getty.edu/research/tools/vocabularies/obtain/download.html>

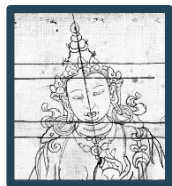
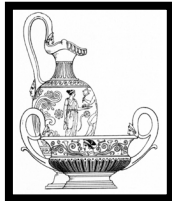
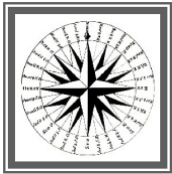
- **Linked Open Data:** SPARQL endpoint, sample queries  
<http://getty.edu/research/tools/vocabularies/loa/index.html>

- **Training Pages:**  
<http://www.getty.edu/research/tools/vocabularies/training.html>

- **Contribute:**  
<http://getty.edu/research/tools/vocabularies/contribute.html>

# The Getty Vocabularies

Discover, link, access, retrieve, research, catalog, index



## Our Team: What We Do

- 1 Managing Editor, 3 Editors, Software Architect
- Processing contributions (normalizing, editing, merging, problem solving)
- Mapping contributor data to correct fields and controlled lists
- Checking exports, communication with our partners
- Education, outreach, future projects



# TYPVS ORBIS TERRARVM.

Getty Museum, Research Institute, Provenance Index, Photo Archive, Library

Centro de Documentación de Bienes Patrimoniales, Chile

Netherlands Institute for Art History (RKD)

Academia Sinica of Taiwan

Pinacoteca do Estado de São Paulo, Brazil

Staatliche Museen zu Berlin Preussischer Kulturbesitz

Courtauld Institute

Grove Art online

ARTstor

Rijksmuseum

Indiana University slide library

Victoria and Albert Museum

Istituto Centrale per il Catalogo e la Documentazione, Rome

Canadian Heritage Information Network (CHIN)

Canadian Centre for Architecture

Frick Art Reference Library

Auckland Museum

Smithsonian Institution National Museum of African Art

National Art Library, London

Avery Index Architectural Periodicals

Mystic Seaport Museum

Harry Ransom Humanities Research Center at the University of Texas at Austin

Bunting Visual Resources Library at the University of New Mexico





Jonathan Ward  
Sr Editor  
Getty Vocabulary Program

1200 Getty Center Drive  
Los Angeles, CA 90049

(1) 310/440-6302  
[jward@getty.edu](mailto:jward@getty.edu)